



# ASHMORE

CONCRETE PUMPING

Over 200 feet of Vertical Reach  
with Our Mighty 63Z-Meter



**Putzmeister**  
PRODUCT SPECIFICATIONS

866-274-6673 | [AshmoreConcrete.com](http://AshmoreConcrete.com)



## **OUR COMPANY, OUR EQUIPMENT, OUR ADVANTAGES.**

---

### **ASHMORE CONCRETE PUMPING**

More than 27 years experience.

Convenient locations in South Carolina and Georgia.

Customer-focused, trained personnel.

ACPA safety-certified boom pump operators.

Dedicated, professional service and support.

---

### **PUTZMEISTER CONCRETE PUMPS**

Variety of boom pump sizes to fit your needs.

Latest concrete pumping technology.

Multi-Z and Z-Fold boom configurations to reach  
where other concrete boom pumps cannot.

High outputs and high pressures.

Proven reliable S-Valve to pump tough mixes.

Smooth free flow hydraulics to prevent boom bounce.

Compact outrigger spreads.

Trailer-mounted concrete pumps also available.

## CUSTOMER-FOCUSED WITH 27+ YEARS EXPERIENCE

*for handling customer needs with expertise*



With more than 27 years experience, we can offer expert solutions to your most difficult concrete placing challenges. We began as concrete contractors in 1985 and added concrete pumping services in 1996. Today, our fleet includes a wide variety of reliable, state-of-the-art Putzmeister concrete pumps and a professional team of people. Our boom pump

operators are ACPA safety-certified; our service techs are highly trained; and our dispatchers are meticulous about scheduling the right unit, at the right place and time to promptly handle your routine and urgent requests. With five locations to serve you, rely on us to handle your next project. Call today ... 866-ASHMORE.

## FEATURING MULTI-Z AND Z-FOLD BOOM VERSATILITY

*for access into tight spots and under low heights*

Unique Multi-Z boom illustrates its versatile unfolding process in this series of photos, highlighting its ability to access tight spots where other booms simply cannot.



1

Putzmeister's Multi-Z boom does not have to be completely unfolded, as the end hose is immediately ready to pour, even in front of the truck.



2

With the boom's flexibility, the unit can be set up right next to the pour for more effective reach.



3

# REACHING WHERE OTHER BOOMS CANNOT

*for less labor-intensive, more productive pours*



4

Innovative Multi-Z boom technology allows our booms to maneuver under extremely low heights. It can also be used in an A-frame configuration.



5

The versatile Multi-Z boom can reach into difficult-to-access areas to easily place concrete and avoid dragging extra delivery line.



6

A long horizontal reach can be quickly achieved under very low heights.

*Note: A Z-Fold boom incorporates a combination of roll-and-fold and Multi-Z boom technology.*

# TACKLING THE TOUGHEST MIXES

for pumping harsh mixes with rugged reliability



An ideal fit for high pressure applications, our rugged S-Valve effortlessly handles extremely harsh concrete mixes. The valve's thick-walled construction, superior fill rate and huge intake opening combine forces to gulp down the toughest mixes with ease.

# DELIVERING A SMOOTH CONCRETE FLOW

for reduced boom bounce

Putzmeister's concrete boom pumps feature exclusive free flow hydraulics, a highly efficient closed loop design that delivers a smooth concrete flow and less boom bounce while also providing higher pump outputs.



# PROVIDING HIGH OUTPUTS, HIGH PRESSURES

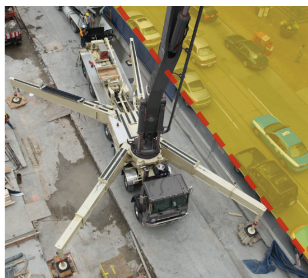
for high performance without modifying the unit

| Pump Cells* |                         | 24Z | 32Z | 36Z | 38Z | 42X | 43Z | 47Z | 52Z | 63Z | 70Z |
|-------------|-------------------------|-----|-----|-----|-----|-----|-----|-----|-----|-----|-----|
| .09         | 117 yd <sup>3</sup> /hr | X   | -   | -   | -   | -   | -   | -   | -   | -   | -   |
|             | 1015 psi Rod Side       |     |     |     |     |     |     |     |     |     |     |
| .16H        | 210 yd <sup>3</sup> /hr | -   | X   | X   | X   | X   | X   | X   | X   | X   | X   |
|             | 1233 psi Rod Side       |     |     |     |     |     |     |     |     |     |     |
| .20H        | 210 yd <sup>3</sup> /hr | -   | -   | -   | -   | X   | -   | -   | -   | -   | -   |
|             | 1233 psi Piston Side    |     |     |     |     |     |     |     |     |     |     |

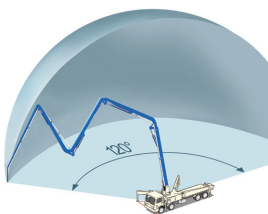
Models above reflect pump cell on applicable Ashmore unit. \*Maximum figures listed.

## OFFERING ONE-SIDED SUPPORT (OSS) OUTRIGGERS

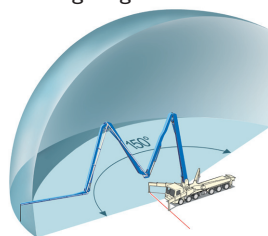
*for setup in busy traffic and on congested job sites*



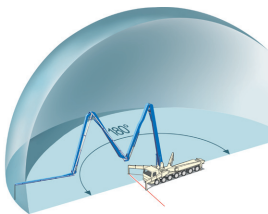
OSS is perfect for congested job sites that demand a larger boom. Once activated, the unique OSS system allows an operator to 'short-rig' a machine's outriggers and safely pump concrete within a defined working range. This advantage is significant during setup in busy traffic or when a lack of space exists on overcrowded job sites. When properly deployed and the system's series of sensors are in full operation, OSS maintains a specially defined working range that prevents an operator from positioning the boom outside of a safe operational range.



43Z- and 47Z-Meter  
working range



52Z-Meter working range



63Z-Meter working range

**ergonic**

**FEATURING ERGONICS®**  
*for greater efficiency*

Offered on selected models, Putzmeister's **exclusive ergonic system** technology allows operators to set parameters that control the boom, pump and other functions for greater pumping efficiency.



30m  
98' 5"

# Putzmeister

## 24Z-METER

25m  
82'

20m  
65' 7"

15m  
49' 3"

10m  
32' 10"

5m  
16' 5"

0

5m  
16' 5"

10m  
32' 10"

15m  
49' 3"

20m  
65' 7"

25m  
82'

25m 82' 20m 65' 7" 15m 49' 3" 10m 32' 10" 5m 16' 5" 0 5m 16' 5" 10m 32' 10" 15m 49' 3"

74' 8"



end hose not to be operated in caution area

Vertical Reach 74' 8"

62' 9"

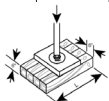
Net Reach 55' 6"

Horizontal Reach 62' 9"

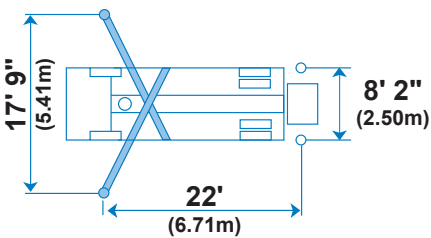
Unfold Ht  
17' 1"

Reach Depth 43' 5"

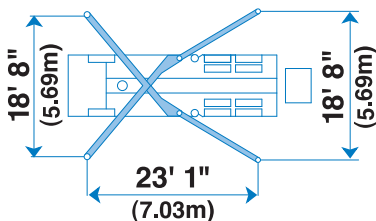
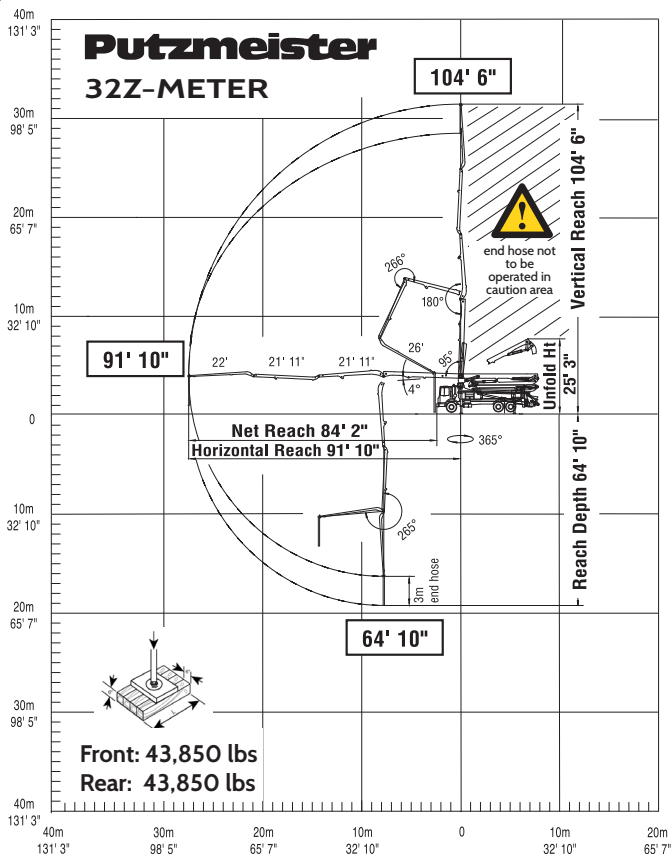
43' 5"



Front: 27,000 lbs  
Rear: 18,000 lbs







# Putzmeister

TECHNOLOGY THAT PUTS YOU FIRST

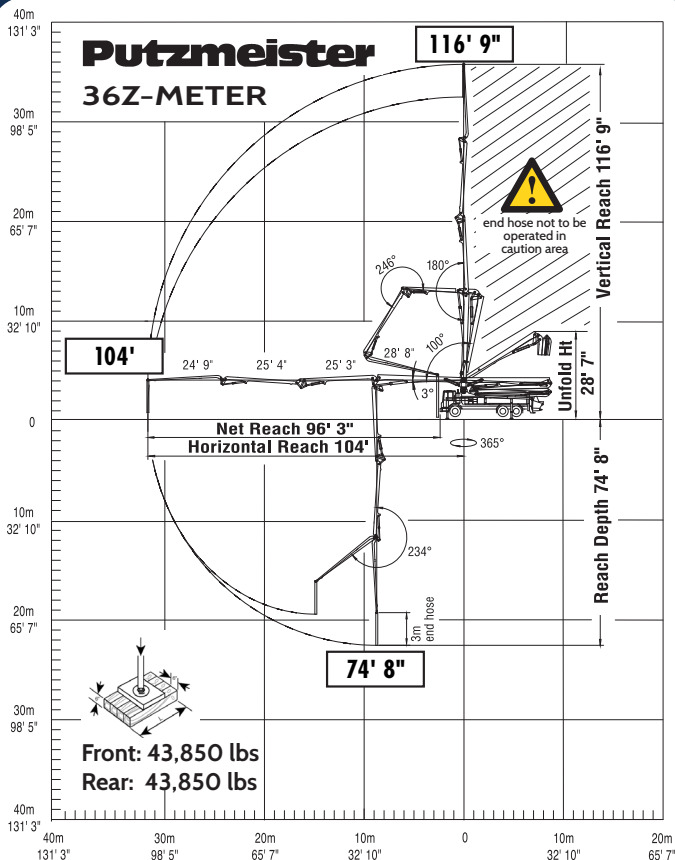
| MODEL SPECS                    | 24Z     | 32Z     | 36Z      | 38Z      |
|--------------------------------|---------|---------|----------|----------|
| <b>BOOM</b>                    | Multi-Z | Multi-Z | Multi-Z◆ | Multi-Z◆ |
| Vertical reach                 | 74' 8"  | 104' 6" | 116' 9"  | 123' 5"  |
| Horizontal reach               | 62' 9"  | 91' 10" | 104'     | 110' 8"  |
| Net reach                      | 55' 6"  | 84' 2"  | 96' 3"   | 103' 2"  |
| Reach depth                    | 43' 5"  | 64' 10" | 74' 8"   | 82' 2"   |
| Unfolding height               | 17' 1"  | 25' 3"  | 28' 7"   | 28' 9"   |
| <b>PUMP CELL*</b>              | .09     | .12L    | .16H     | .16H     |
| Output (yd <sup>3</sup> /hr)   | 117     | 210     | 210      | 210      |
| Pressure (psi)                 | 1015    | 1233    | 1233     | 1233     |
| <b>OUTRIGGERS</b>              |         |         |          |          |
| Front                          | 17' 9"  | 18' 8"  | 20' 7"   | 20' 7"   |
| Rear                           | 8' 2"   | 18' 8"  | 21' 8"   | 21' 8"   |
| Side to side                   | 22'     | 23' 1"  | 22' 11"  | 22' 11"  |
| <b>OSS (One-Sided Support)</b> |         |         |          |          |
| Front                          | —       | —       | —        | —        |
| Rear                           | —       | —       | —        | —        |
| Side to side                   | —       | —       | —        | —        |
| <b>Outrigger Loads</b>         |         |         |          |          |
| Front load (lbs)               | 27,000  | 43,850  | 43,850   | 41,350   |
| Rear load (lbs)                | 18,000  | 43,850  | 43,850   | 43,850   |

◆ Roll-&-Fold versions available. \*Maximum theoretical values listed - rod side.

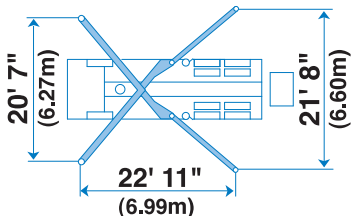
\*\*Piston side —Not applicable

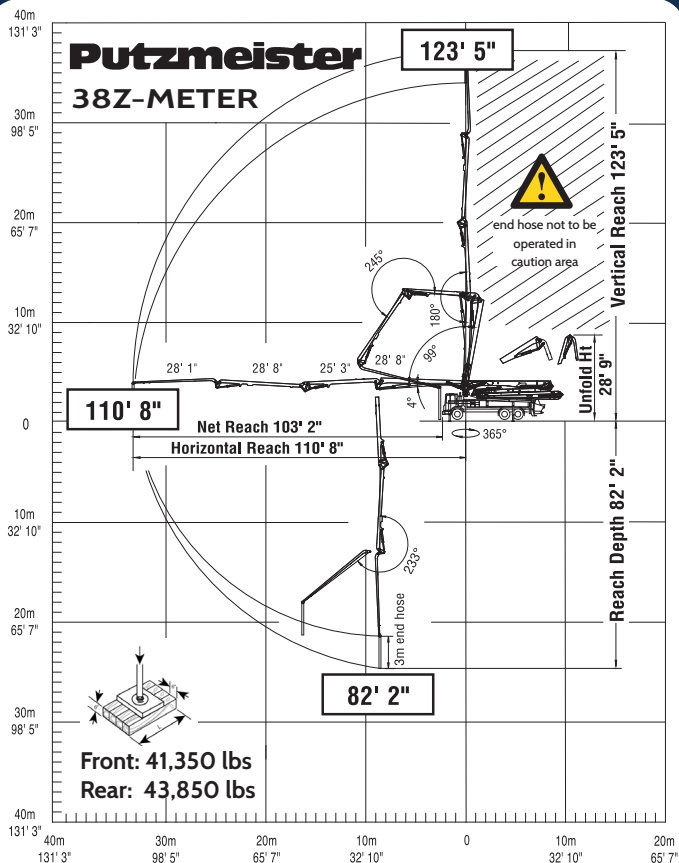
| 42X         | 43Z     | 47Z     | 52Z     | 63Z      |
|-------------|---------|---------|---------|----------|
| Roll-&-Fold | Z-Fold  | Z-Fold  | Multi-Z | Z-Fold   |
| 136' 10"    | 138' 5" | 151' 3" | 169' 7" | 203' 9"  |
| 124' 8"     | 125' 4" | 138' 1" | 157' 6" | 190' 7"  |
| 115' 9"     | 115' 7" | 128' 2" | 147' 3" | 176' 7"  |
| 92' 9"      | 95' 6"  | 105' 8" | 121' 5" | 151' 11" |
| 32' 6"      | 30' 2"  | 31' 2"  | 33' 2"  | 75' 6"   |
| .20H        | .16H    | .16H    | .16H    | .16H     |
| 260**       | 210     | 210     | 210     | 210      |
| 1233**      | 1233    | 1233    | 1233    | 1233     |
| 26' 1"      | 26' 1"  | 26' 1"  | 34' 9"  | 37' 9"   |
| 29' 6"      | 29' 6"  | 29' 6"  | 35'     | 42' 1"   |
| 28' 6"      | 28' 6"  | 28' 6"  | 38' 1"  | 40' 9"   |
| —           | 17' 2"  | 17' 3"  | 24' 9"  | 25' 8"   |
| —           | 22' 2"  | 22' 2"  | 24' 10" | 28' 5"   |
| —           | 24' 11" | 24' 7"  | 48' 5"  | 54' 6"   |
| 53,275      | 47,210  | 58,435  | 76,875  | 97,800   |
| 53,275      | 48,335  | 57,310  | 75,000  | 92,200   |

Specs in this booklet are subject to change without prior notice. Photos are for illustrative purposes only.

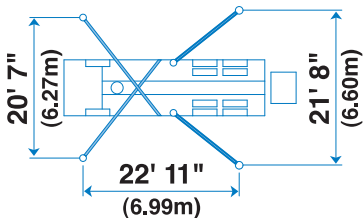


36Z offered in  
Multi-Z boom  
(shown) and  
roll-and-fold  
boom versions.



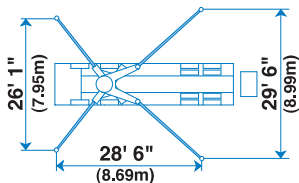
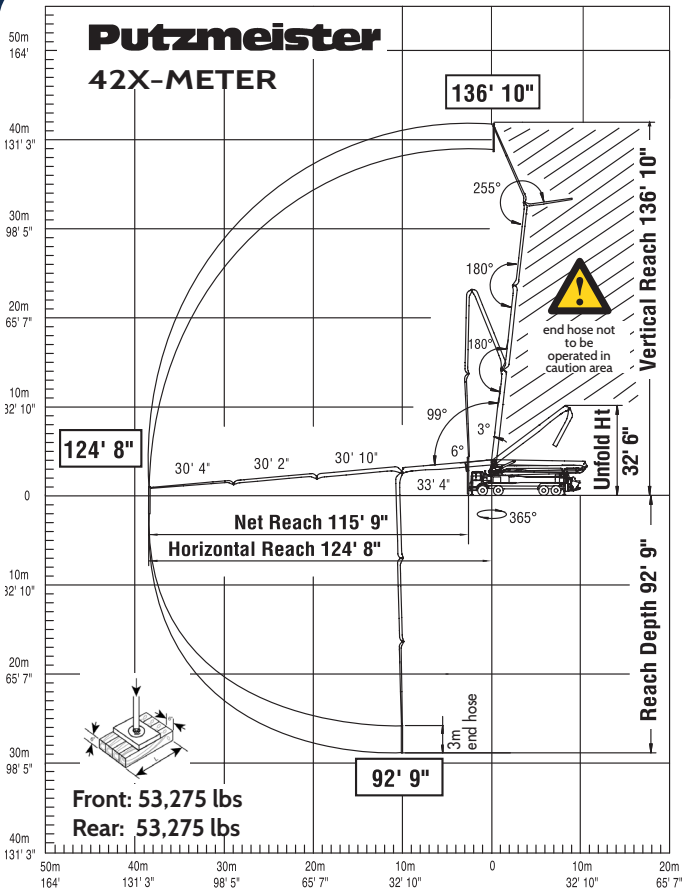


38Z offered in  
Multi-Z boom  
(shown) and  
roll-and-fold  
boom versions.



# Putzmeister

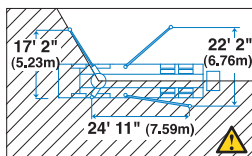
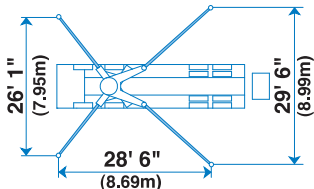
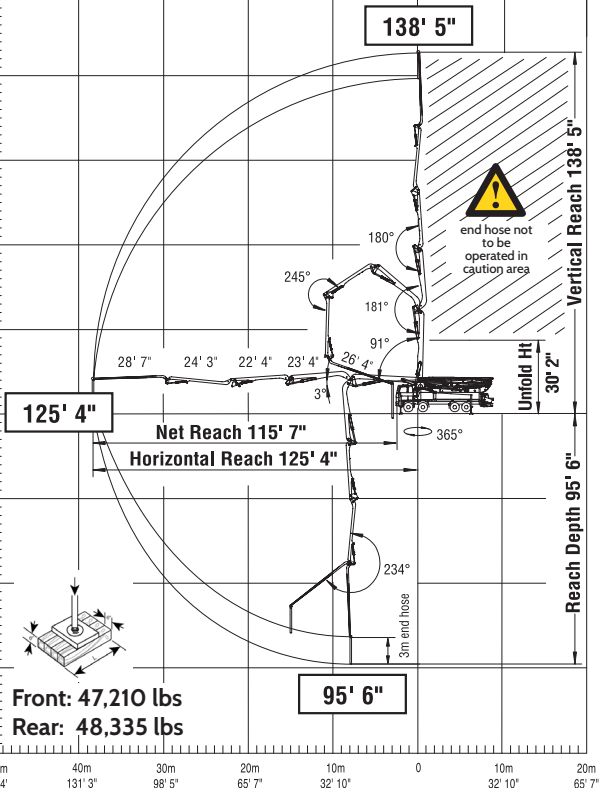
## 42X-METER



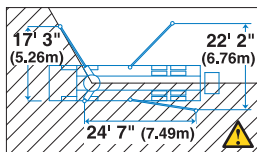
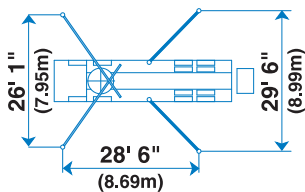
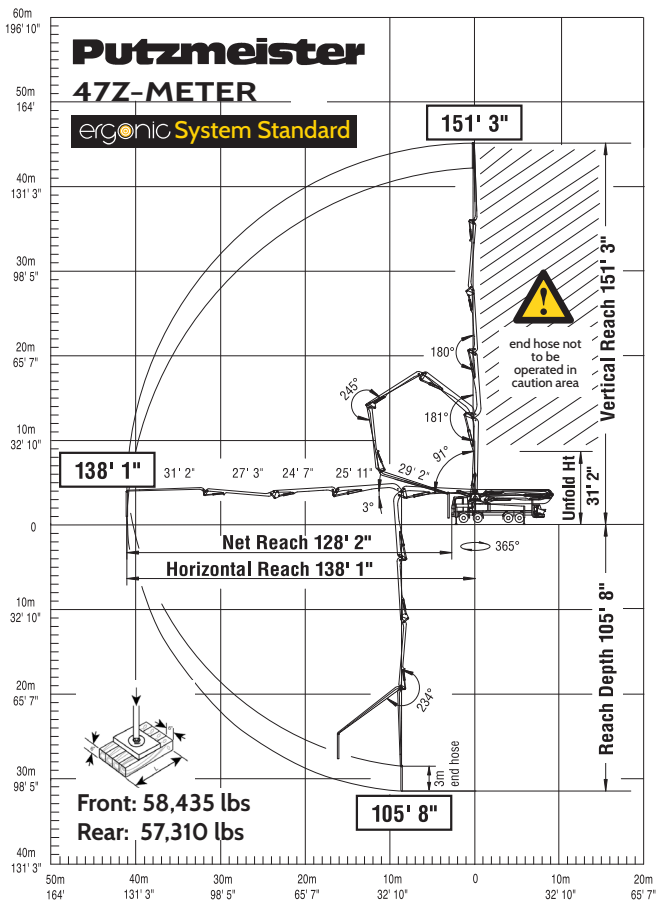
60m  
196' 10"  
50m  
164'  
40m  
131' 3"  
30m  
98' 5"  
20m  
65' 7"  
10m  
32' 10"  
0  
10m  
32' 10"  
20m  
65' 7"  
30m  
98' 5"  
40m  
131' 3"  
50m  
164'  
60m  
196' 10"

# Putzmeister

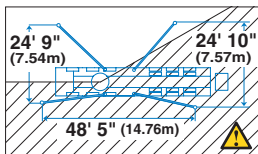
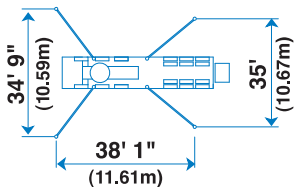
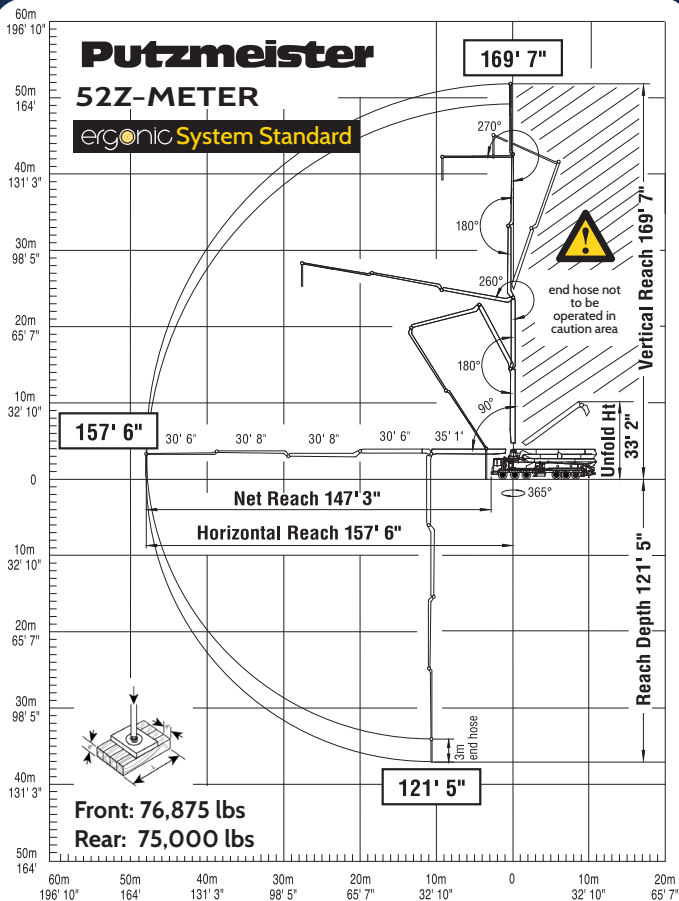
## 43Z-METER

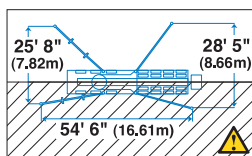
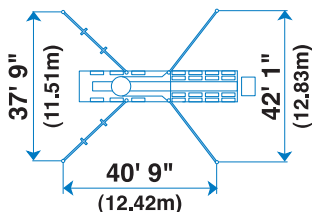
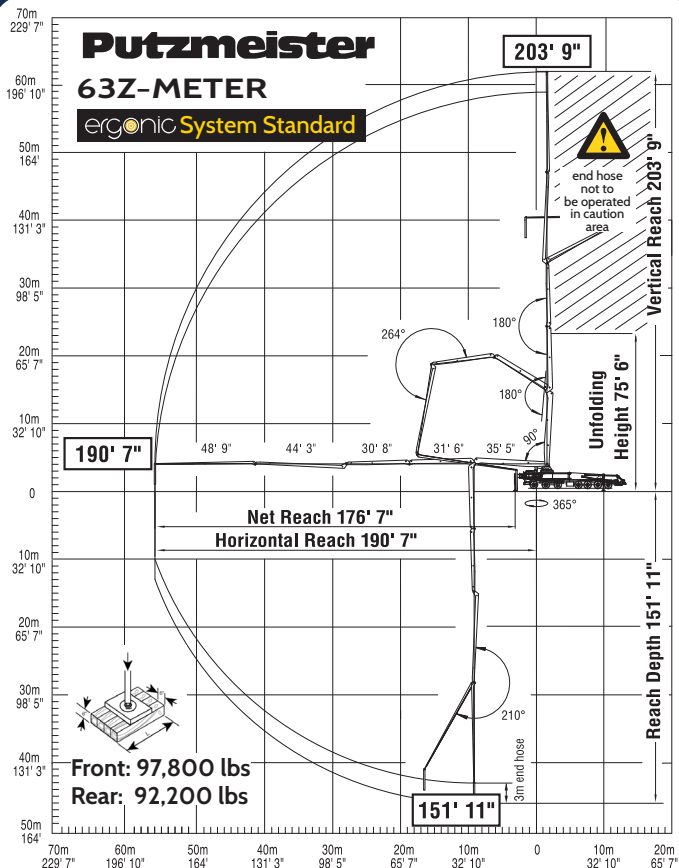






With One-Sided Support (OSS) 120°





# Putzmeister

## THOM-KATTS®

Trailer-Mounted  
Concrete/Shotcrete  
Pumps



### PERFORMANCE\*

|                             | TK 40                  | TK 70                  |
|-----------------------------|------------------------|------------------------|
| Maximum volume output       | 40 yd <sup>3</sup> /hr | 74 yd <sup>3</sup> /hr |
| Maximum concrete pressure   | 1150 psi               | 1130 psi               |
| Maximum aggregate size      | 1.5"                   | 1.5"                   |
| Horizontal pumping distance | 1100 ft                | 600 ft                 |
| Vertical pumping distance   | 400 ft                 | 400 ft                 |

### TECHNICAL INFORMATION

|                            |           |           |
|----------------------------|-----------|-----------|
| Material cylinders         | 6" x 39"  | 7" x 39"  |
| Maximum strokes per minute | 32        | 42        |
| Hopper height              | 49"       | 49"       |
| Hopper capacity            | 9.5 cu ft | 9.5 cu ft |
| Engine - Deutz             | BF4L2011  | BF4M2012  |
| Engine horsepower          | 68 hp     | 100 hp    |

### DIMENSIONS

|        |          |          |
|--------|----------|----------|
| Length | 191"     | 191"     |
| Width  | 70"      | 70"      |
| Height | 71"      | 71"      |
| Weight | 5600 lbs | 6400 lbs |

\*Maximum theoretical figures listed. Maximum output and pressure cannot be simultaneously achieved.



# ASHMORE

CONCRETE PUMPING

**SEVERAL  
LOCATIONS  
TO SERVE  
YOU**



## HEADQUARTERS

PO Box 1000  
5100 Pierce Court  
Evans, GA 30809  
706-868-5854



PO Box 1680  
224 Camber Way  
Summerville, SC 29483  
843-832-8063

**ASHMORE CONCRETE PUMPING**

**866-274-6673 | [AshmoreConcrete.com](http://AshmoreConcrete.com)**